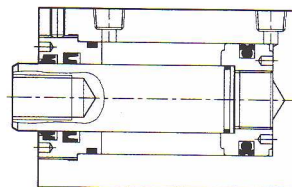


DCF DCS

VERIN COMPACT HYDRAULIQUE




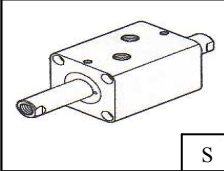
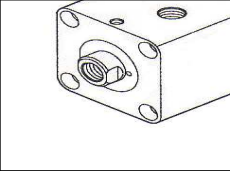

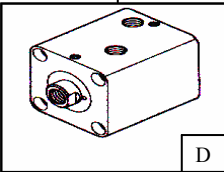
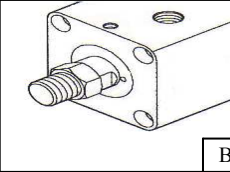
Structure interne



Données

Données	Alésage	DCF 32	DCF 40	DCF 50	DCF 63	DCF 80
Fonctionnement		Double effet				
Fluide		Huile				
Montage		Par le dessus (DCS), face avant (DCF)				
Pression d'utilisation	bar	2 ~ 140				
Température de fonctionnement	°C	0 ~ 60				
Vitesse	mm/sec	50 ~ 300				
Corps		Acier				
Raccordement		G 1/4"	G 3/8"			
Courses standards	mm	05 - 10 - 15 - 20 - 25 - 30 - 40 - 50				

Construction de la référence

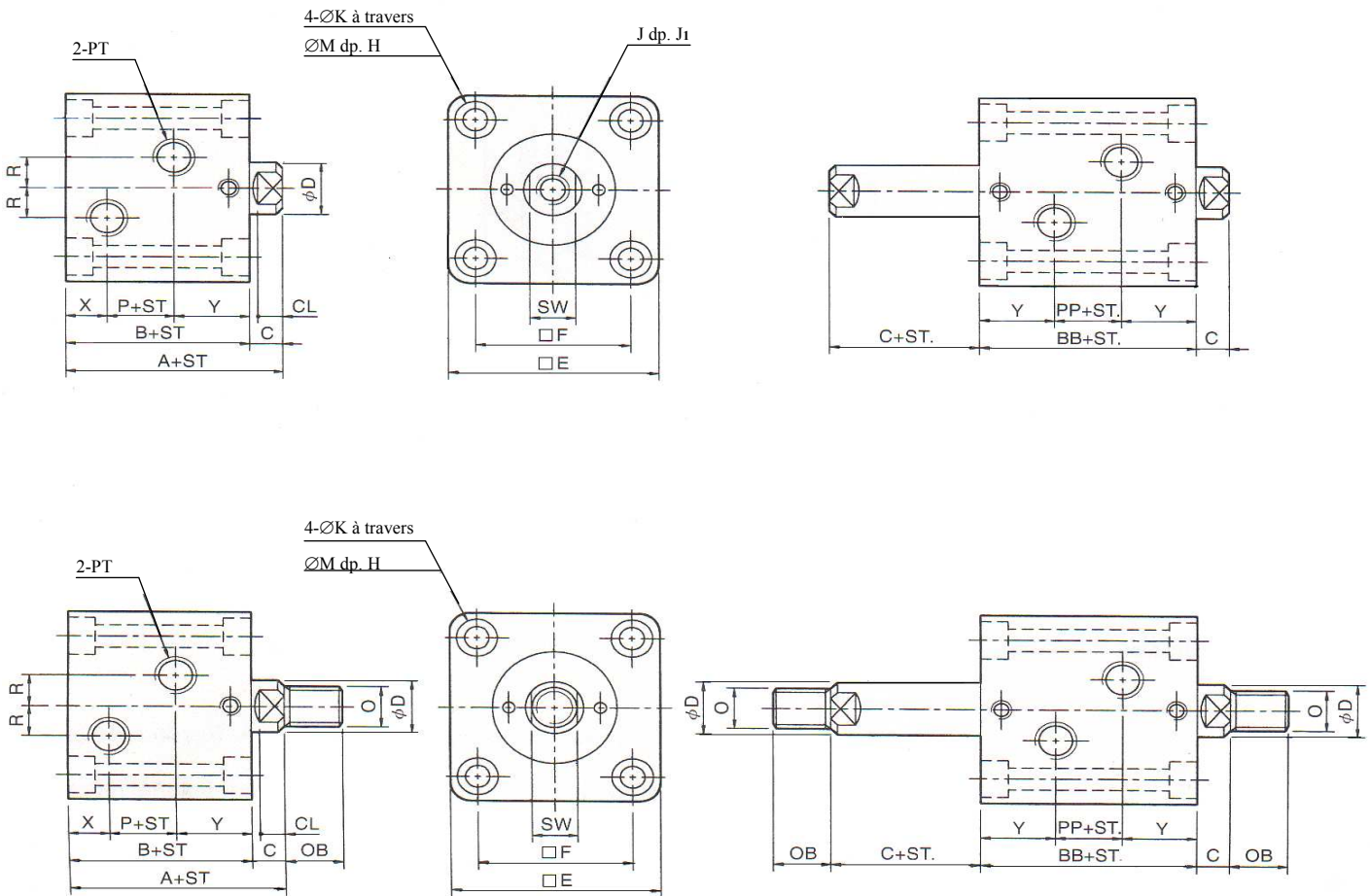
DCF	20	30	D	B
Modèle	Alésage	Course	Tige	Extrémité de la tige
 DCF	32 - Ø 32 mm 40 - Ø 40 mm 50 - Ø 50 mm 63 - Ø 63 mm 80 - Ø 80 mm	5 ~ 30 mm 5 ~ 50 mm 5 ~ 50 mm 5 ~ 50 mm 5 ~ 50 mm	 S	
Montage face avant (DCF)			S : No code	No code : Tige taraudée
 DCS			 D	 B
Montage par le dessus (DCS)			D : Double tige	Tige fileté

DCF DCS

VERIN COMPACT HYDRAULIQUE



■ DCF Ø 32 ~ Ø 80



Taille	A	AL	B	BB	C	CL	D	E	F	H	J	J ₁
Ø 32	64	89	54	69	10	7	20	62	47	6.5	M12 X 1.75	15
Ø 40	65	95	55	70	10	7	25	70	52	9	M16 X 2.0	20
Ø 50	71	106	60	75	11	8	30	80	58	11	M20 X 2.5	25
Ø 63	80	120	67	82	13	10	35	94	69	13	M27 X 3.0	35
Ø 80	95	140	78	93	17	14	45	114	86	15	M30 X 3.0	35

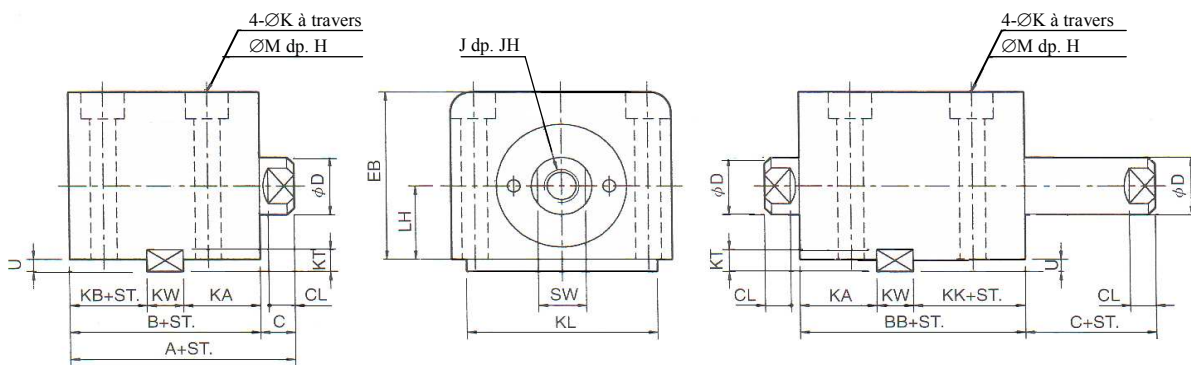
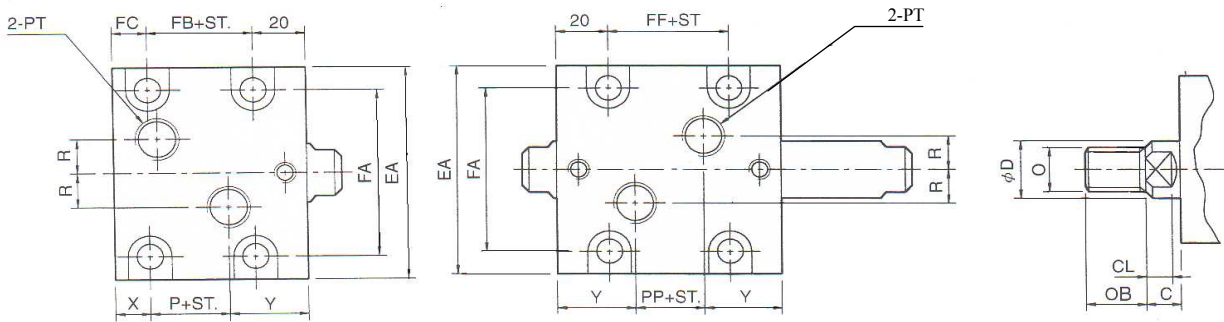
Taille	K	M	O	OB	P	PP	PT	R	SW	X	Y
Ø 32	6.6	11	M16 X 1.5	25	14	13	PT 1/4	10	17	12	28
Ø 40	9	14	M22 X 1.5	30	15	14	PT 1/4	10	22	12	28
Ø 50	11	18	M26 X 1.5	35	18	16	PT 1/4	10	27	12.5	29.5
Ø 63	14	20	M30 X 1.5	40	20	20	PT 3/8	10	32	16	31
Ø 80	16	23	M39 X 1.5	45	27	27	PT 3/8	15	41	18	33

DCF DCS

VERIN COMPACT HYDRAULIQUE



■ DCS Ø 32 ~ Ø 63



Taille	A	AL	B	BB	C	CL	D	EA	EB	FA	FB	FC	FF	H	J	JH	K
Ø 32	64	89	54	69	10	7	20	70	56	56	24	10	32	9	M12 X 1.75	15	9
Ø 40	65	95	55	70	10	7	25	80	64	62	23	12	32	11	M16 X 2.0	20	11
Ø 50	71	106	60	75	11	8	30	94	74	74	27	13	35	13	M20 X 2.5	25	14
Ø 63	80	120	67	82	13	10	35	114	89	90	32	15	42	15	M27 X 3.0	35	16

Taille	KA	KB	KK	KL	KW	KT	LH	M	O	OB	P	PP	PT	R	SW	U	X	Y
Ø 32	28	14	29	63	12	8	25	14	M16X1.5	25	14	13	PT 1/4	10	17	4.5	12	28
Ø 40	28	15	30	70	12	8	29	18	M22 X 1.5	30	15	14	PT 1/4	10	22	4.5	12	28
Ø 50	29	17	32	80	14	9	34	20	M26 X 1.5	35	18	16	PT 1/4	10	27	5	12.5	29.5
Ø 63	31	20	35	100	16	10	42	23	M30 X 1.5	40	20	20	PT 3/8	10	32	5.5	16	31